

National Health Security Preparedness Index Stakeholder Engagement and Communication Workgroup

22 March 2017 | 2:30 - 3:30pm ET



Web Link for Presentation Slides: <https://uky.zoom.us/j/474312686>

Call: 855.880.1246 or 877.369.0926 (Toll Free)

Meeting ID: 474 312 686

(please mute computer speakers if using phone audio)

NHSPI Program Management Office

University of Kentucky

Agenda

2016 Preparedness Index Update

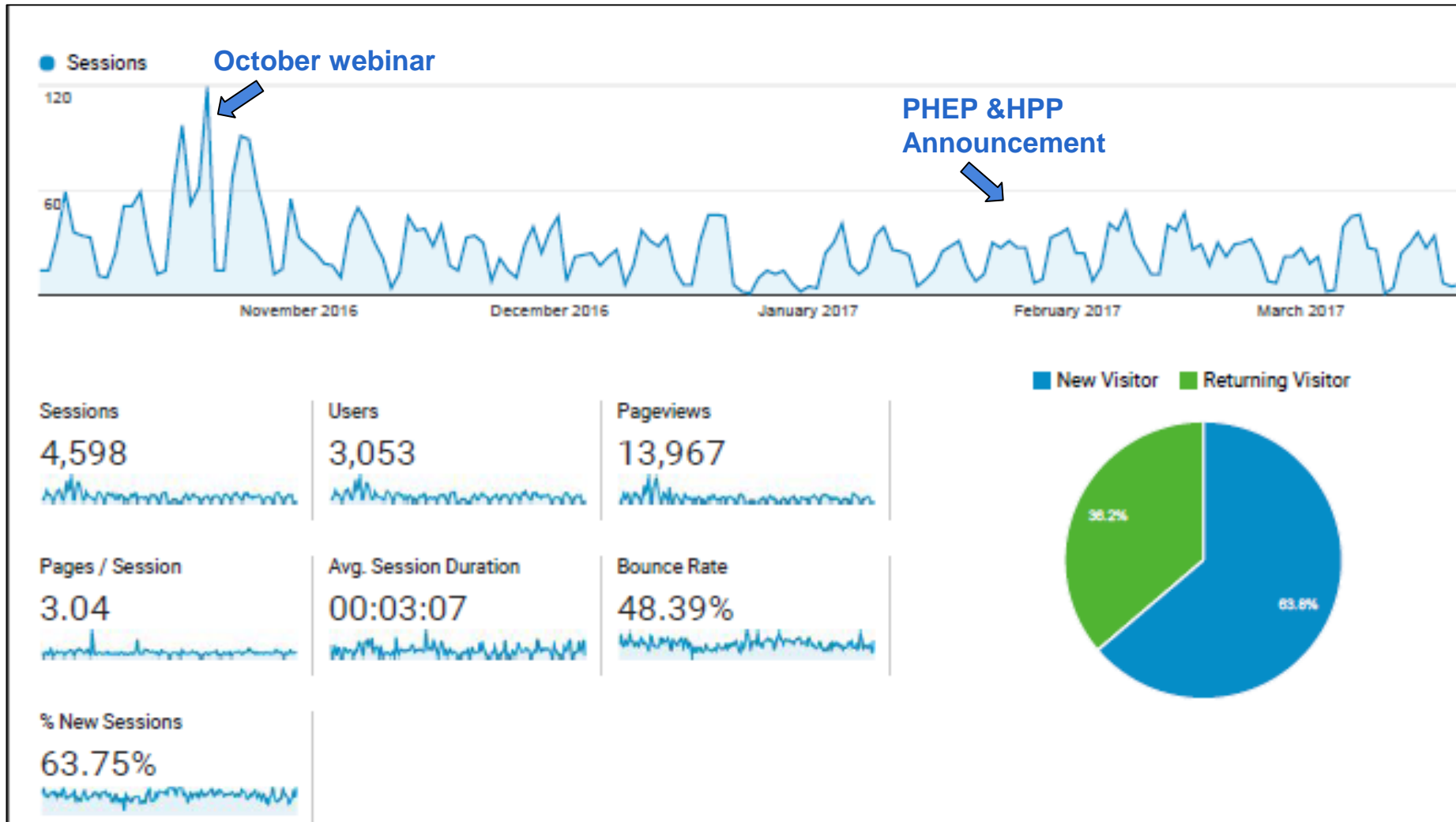
- Website usage
- Preparedness Innovator Challenge and Tipsheet on Index Use

Future Index Development Activities

2017 Preparedness Index Update

- 2017 Preliminary Results Summary, Changes from 2016 Index
- 2017 Release Activities starting April 20

Website Metrics -- October 2016 to March 2017



Preparedness Innovator Challenge: *Using the Index to Mobilize Action*

- Soliciting stories about novel ways of using the Index to:
 - Communicate the importance of preparedness to stakeholders and raise awareness, knowledge, and understanding about core preparedness capabilities and components;
 - Convene stakeholders and initiate dialogue and discussion across organizations and sectors about preparedness roles and responsibilities;
 - Identify strengths, weaknesses, opportunities, and threats related to preparedness capabilities and resources;
 - Develop shared priorities and plans for improving preparedness across sectors and stakeholders;
 - Strengthen coordination, collaboration and partnerships among organizations and sectors working to improve preparedness;
 - Advocate and secure resources for improving preparedness and health security;
 - Provide technical assistance and support to stakeholders seeking to strengthen their contributions to preparedness and health security; and
 - Monitor progress in improving preparedness, informing updates and corrections to improvement plans and strategies.
- Website home page link, Submission Guide provided
- Email sent to you with draft messages; please share with your networks
- Tipsheet on Using the Index – draft under review
- Challenge open March 7 through July 31
- August review of submissions by a panel of judges

- Environmental and Occupational Health Domain
– partner with National Conference of State Legislatures
- Adding scores for U. S. Territories – discussion with ASTHO
- Adding Index scores for selected metropolitan areas – discussion with NACCHO Big Cities Coalition

2017 Index Update – Key Changes from 2016 Release

	2016 Release	2017 Release
Item measures	116	120
Foundational measures	18	19
Total measures	134	139

- District of Columbia data added for all measures
- 9 item measures are new and were not included in 2016 release
- 7 item measures with changed specifications in 2017 as recommended by APHL
- One 2016 release measure is a Foundational Measure in 2017 (state PH lab participation in federal surveillance programs FoodNet or PulseNet)
- 4 measures removed from NHSPI 2017; data are no longer being collected for 3 measures, one is no longer state responsibility
- Methodological changes implemented for 2016 Release continue; new measure data added for all four years as available

New Measures Added

M911. State laboratory capacity for testing toxic agents in soil

M902. Whether the state has a Level 1 or Level 2 LRN-C Laboratory

Participation in Health Care Coalitions supported through the federal ASPR
Hospital Preparedness Program (HPP)

M9031. Percentage of {hospitals} that participate

M9032. Percentage of {emergency medical service agencies} that participate

M9033. Percentage of {emergency management agencies} that participate

M9034. Percentage of {local health departments} that participate

Demonstrated meaningful use of certified electronic health record technology
(CEHRT)

M906. The percentage of short-term general and Critical Access hospitals
that have demonstrated meaningful use

M907. The percentage of all office-based medical doctors and doctors of
osteopathy that have demonstrated meaningful use

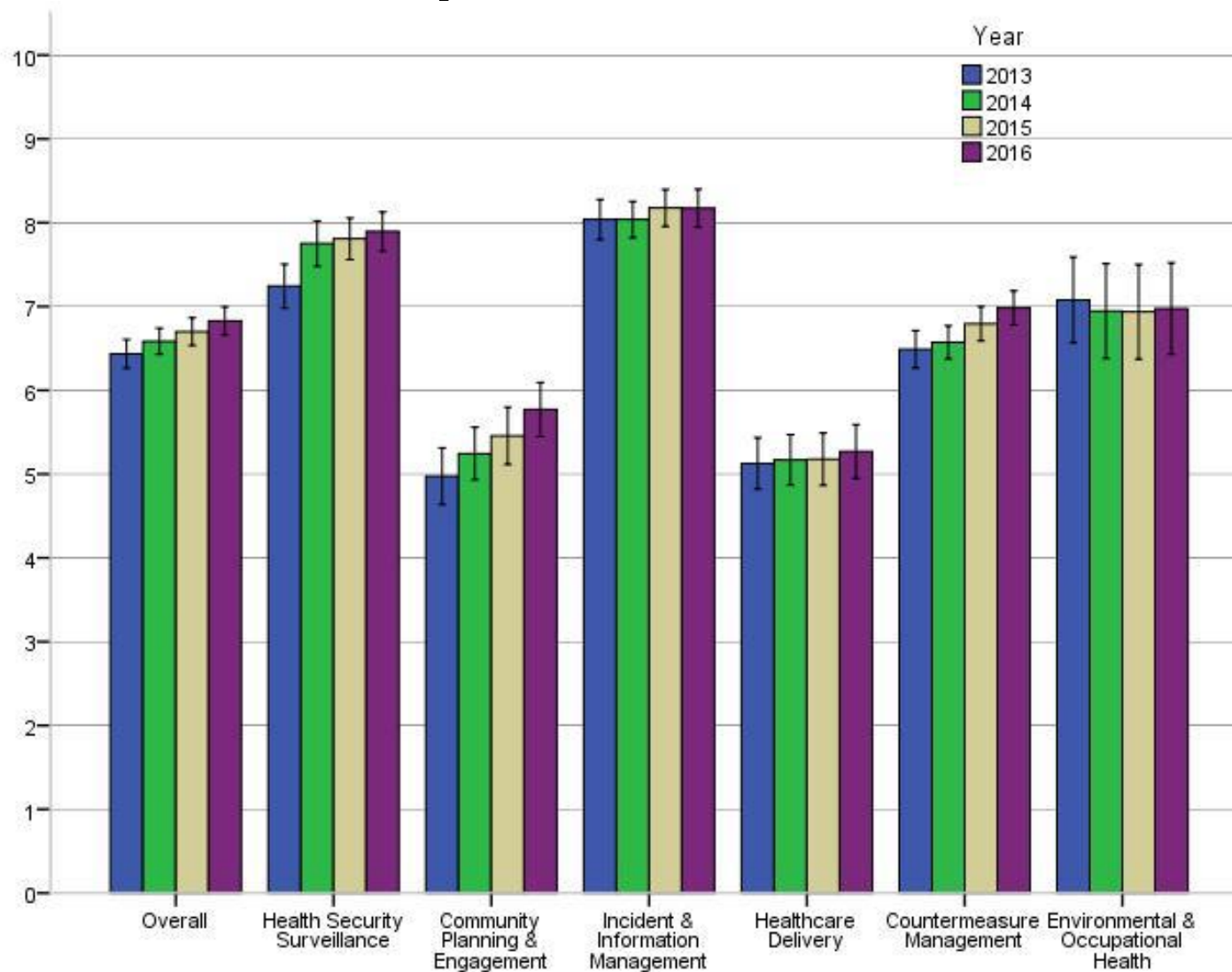
M904 - {Number of} Environmental Scientists and Specialists, Including Health
{per 100,000 population}

Measures removed, updated data are no longer being collected

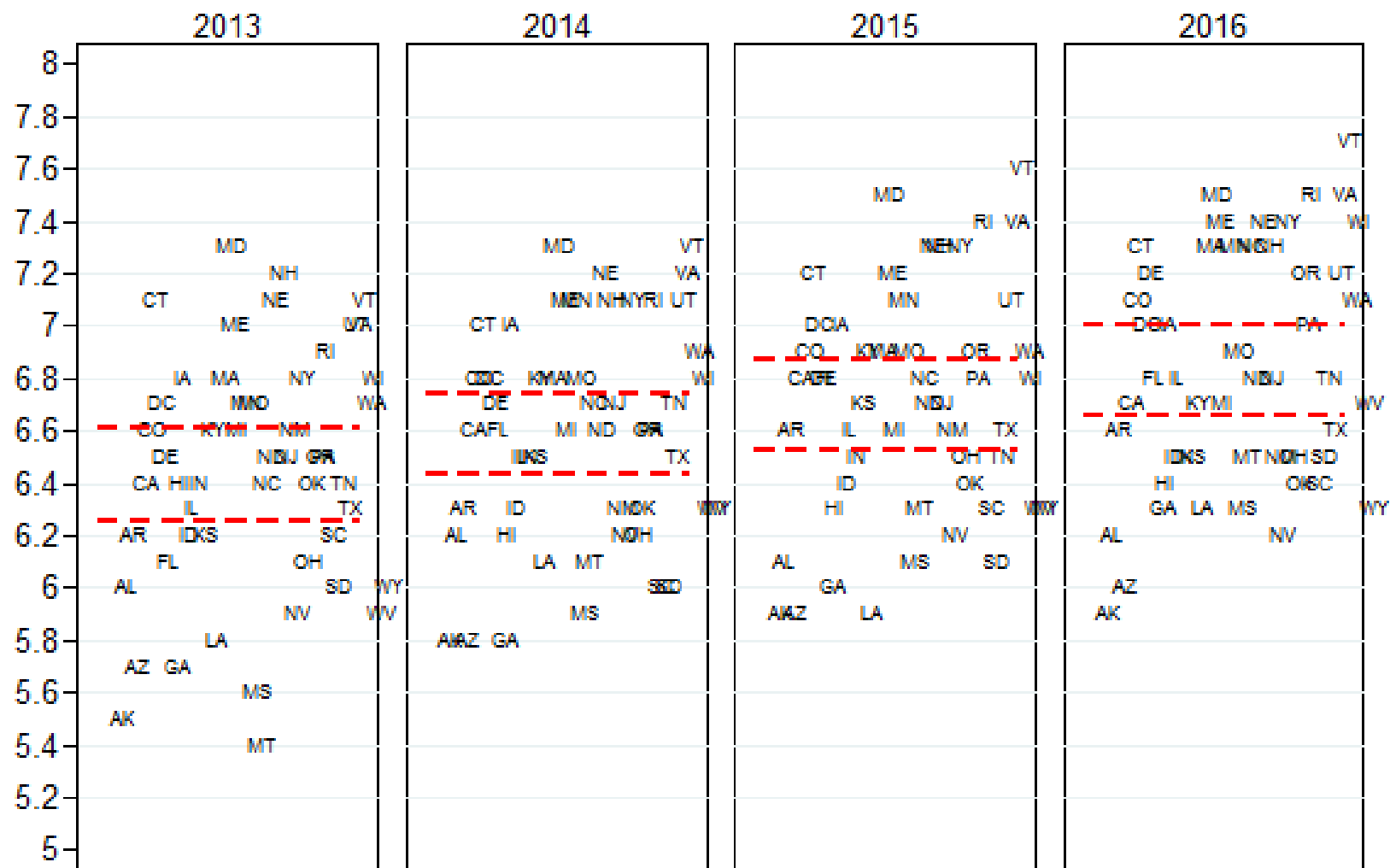
- M47 - Is your state education agency a member of the state emergency planning committee?
- M68 - Degree to which state has a repackaging procedure in place, particularly for bulk medications for public dispensing
- M311 - {State average} nursing home staffing turnover.
- M312 - {Percentage of} long-stay nursing home residents hospitalized within a six-month period.

1. **National preparedness levels increased by average of 1.9%**
2. **33 states experienced improvements in preparedness**
3. **Largest improvements in the Community Planning & Engagement domain**
4. **Highest levels remained in the Incident & Information Management domain**
5. **Lowest levels remained in the Healthcare Delivery domain and trended upward**
6. **Environmental and Occupational Health domain trended up modestly**, contrasting with a downward trend in prior years

2017 National Health Security Preparedness Index Trends by Domain and Year



2017 National Health Security Preparedness Index State Trends by Year



NOTE: Dotted lines represent statistical confidence intervals for the national average Index score.

2017 Index Data Preview Application

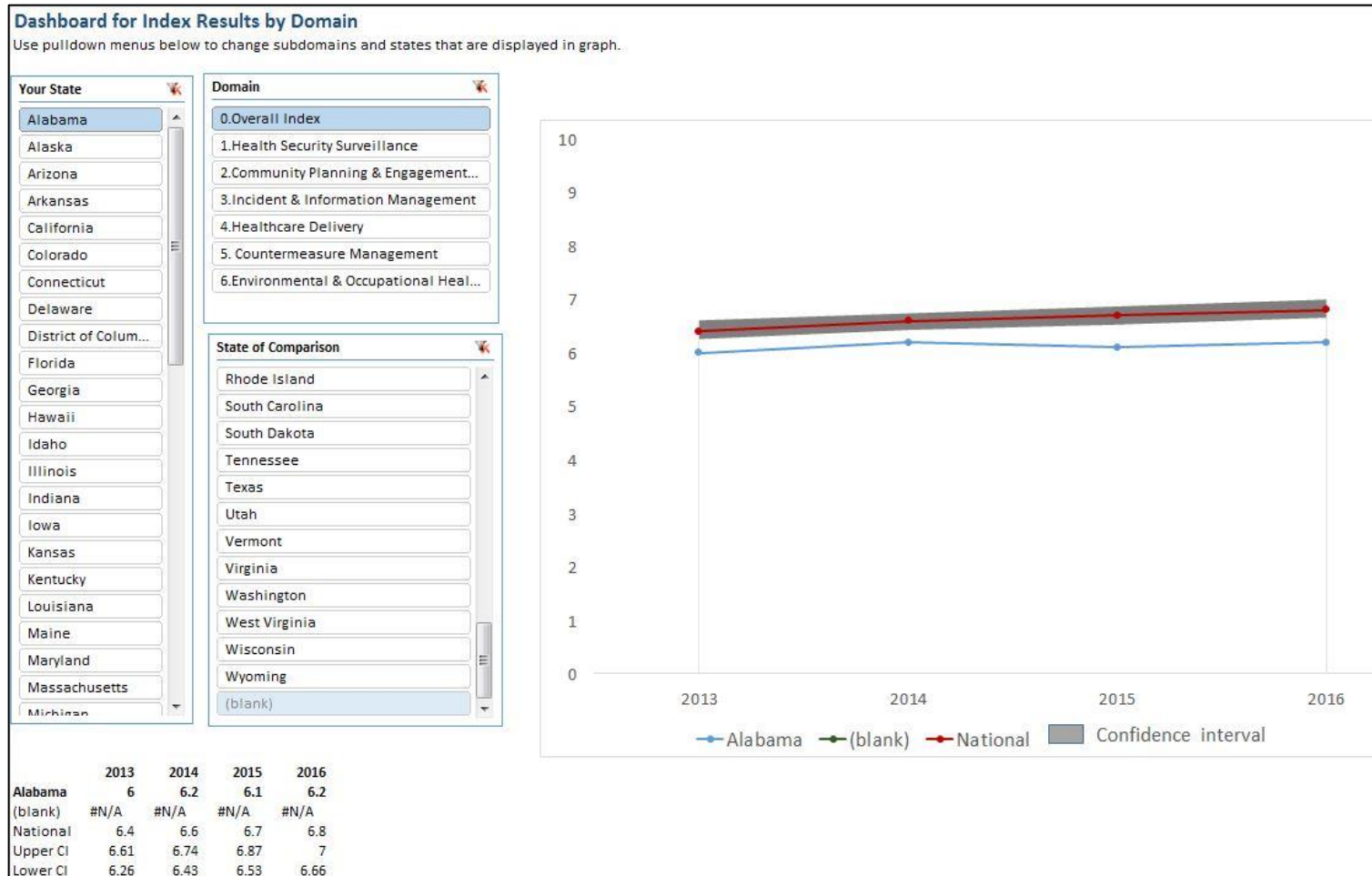
<https://is.gd/2017NHSPI>

Contents
1. Summary pages
Tab 1: Overview and Instructions (you are here).
Tab 2: Summary of Methodology
Tab 3: Dashboard display of Index results overall and by domain.
Tab 4: Dashboard display of Index results by subdomain.
Tab 5: State Summary of Index results by domain and subdomain.
2. Raw data pages
Tab 6: Raw data for domains and subdomains
Tab 7: PHSEI- Health Surveillance & Epidemiological Investigation
Tab 8: BMLT- Biological Monitoring & Laboratory Testing
Tab 9: CSCC- Cross-Sector / Community Collaboration
Tab 10: ARP- Children & Other At-Risk Populations
Tab 11: MVDE- Management of Volunteers during Emergencies
Tab 12: SCC- Social Capital & Cohesion
Tab 13: IMMAC- Incident Management & Multi-Agency Coordination
Tab 14: EPIW- Emergency Public Information & Warning
Tab 15: LA- Legal & Administrative
Tab 16: PC- Prehospital Care
Tab 17: IC- Inpatient Care
Tab 18: LTC- Long-Term Care
Tab 19: MBH- Mental & Behavioral Healthcare
Tab 20: HC- Home Care
Tab 21: MMMDD- Medical Materiel Management, Distribution, & Dispensing
Tab 22: CUE- Countermeasure Utilization & Effectiveness

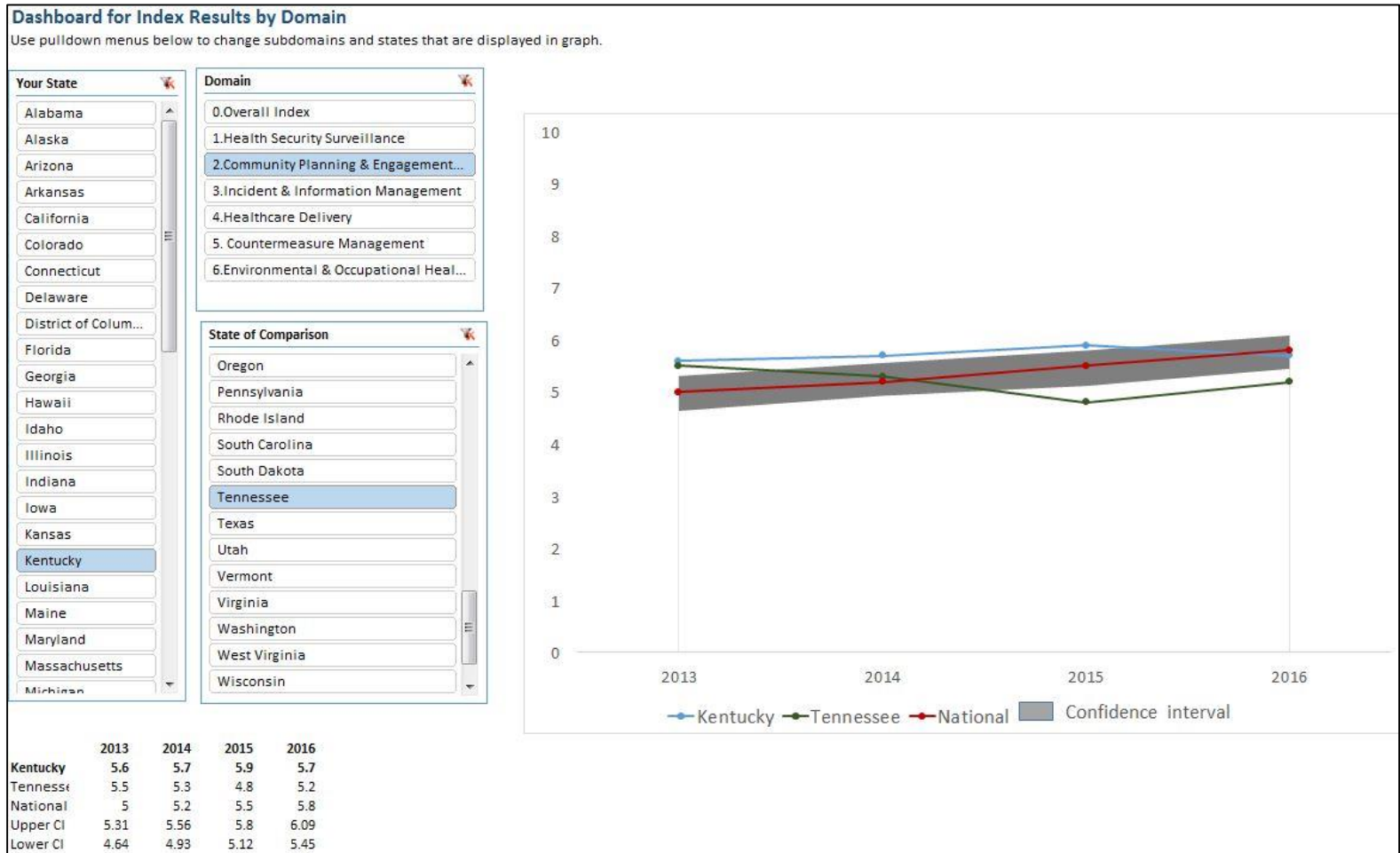
[Overview](#) / [Methodology](#) / [Dashboard Domain](#) / [Dashboard Subdomain](#) / [StateSummary](#) / [Domains&Subdomains](#) / [PHSEI](#) / [BMLT](#) / [CSCC](#)



2017 Index Data Preview Application



2017 Index Data Preview Application



Timeline

- *Sept-Oct 2016* *Call for new measures for 2017 Index*
- *Dec to Jan 2017* *Public comment period on suggested updates*
- *Jan to Feb* *Final Index Calculations, Delphi for new measures*

- Mar 9 to 24 Index Preliminary results (PDF) to state
 stakeholders at <https://is.gd/2017NHSPI>
 password = NHSPI2017Index
- Mar 15 and 20 Webinars for state stakeholders completed
- April 20 2017 Index release – website and activities
- April 27 Preparedness Summit Panel Presentation

2017 Index Release Activities – April 20

New website goes live with updated data visualization

- Executive Summary, Methodology, downloadable excel data sheet
- State data summary PDFs on website (one-pagers)
- How to Use the Index guides (one-pagers)

National Media – press release with embargoed data and info to Associated Press on April 6; other outlets on April 14

Local Media – customized press releases for each state; largest newspapers and radio networks in each state on April 14

Radio and TV live interviews on April 19 and 20

Social Media – Twitter Facebook, LinkedIn

Index Communications Toolkit – Executive Summary, State Summaries, Sample messages for social media, email, presentations

2017 Index Release Activities – April to August

- **April 27** -- Preparedness Summit Panel
Presentation with John Wiesman, Alonzo Plough,
Suzet McKinney, Glen Mays
- **May through December** -- Webinar Series for
different audiences, and to test an on-line learning
community
- **May through December** – state/community blogs,
op-eds, letters to the editor on public health
preparedness and local issues

For More Information



National Program Office

Supported by The Robert Wood Johnson Foundation

Glen P. Mays, Ph.D., M.P.H. glen.mays@uky.edu

Anna Goodman Hoover, Ph.D. Anna.Hoover@uky.edu

Michael Childress, M.S. Michael.childress@uky.edu

Ann Kelly, MHA Ann.Kelly@uky.edu

Email: NHSPI@uky.edu

Web: www.nhspi.org

Twitter: [@NHSPIndex](https://twitter.com/NHSPIndex)